



**India Meteorological Department
(Ministry of Earth Sciences)**

BULLETIN Number: 11 (BOB/03/2021)

TIME OF ISSUE: 1945 HOURS IST

DATED: 14.09.2021

FROM: INDIA METEOROLOGICAL DEPARTMENT (FAX NO. 24643965/24699216/24623220)

**TO: CONTROL ROOM, NDM, MINISTRY OF HOME AFFAIRS (FAX.NO. 23093750)
CONTROL ROOM NDMA (FAX.NO. 26701729)
CABINET SECRETARIAT (FAX.NO.23012284, 23018638)
PS TO HON'BLE MINISTER FOR S & T AND EARTH SCIENCES (FAX NO.23316745)
SECRETARY, MOES, (FAX NO. 24629777)
H.Q. (INTEGRATED DEFENCE STAFF AND CDS) (FAX NO. 23005137/23005147)
DIRECTOR GENERAL, DOORDARSHAN (23385843)
DIRECTOR GENERAL, AIR (23421105, 23421219)
PIB MOES (FAX NO. 23389042)
UNI (FAX NO. 23355841)
D.G. NATIONAL DISASTER RESPONSE FORCE (NDRF) (FAX NO. 26105912, 2436 3260)
DIRECTOR, PUNCTUALITY, INDIAN RAILWAYS (FAX NO. 23388503)
CHIEF SECRETARY, GOVT. OF ODISHA (FAX NO. 0674 -2536660)
CHIEF SECRETARY, GOVT. OF WEST BENGAL (FAX NO. 033-22144328)
CHIEF SECRETARY, ANDAMAN & NICOBAR ISLANDS (FAX NO. 03192- 232656)
CHIEF SECRETARY, ANDHRA PRADESH (FAX NO. 0863-2441029, 08645-246600)
CHIEF SECRETARY, JHARKHAND (FAX NO. 0651-2400255)
CHIEF SECRETARY, TELANGANA (FAX NO. 040-23453700)
CHIEF SECRETARY, CHATTISGARH (FAX NO 0771-2221206)
CHIEF SECRETARY, GOA (FAX NO. 0832-2415201)
CHIEF SECRETARY, MAHARASHTRA (FAX NO. FAX NO. 022- 22028594)
CHIEF SECRETARY, GUJARAT (FAX NO. 079-23250305)
CHIEF SECRETARY, MADHYA PRADESH (FAX NO. 0755-2441076)
CHIEF SECRETARY, RAJASTHAN (FAX NO. 141 2227114)
CHIEF SECRETARY, UTTAR PRADESH (FAX NO. 0522 2239283)
CHIEF SECRETARY, HARYANA (FAX NO. 0172 2740317)**

Sub: Depression over north Chhattisgarh & adjoining East Madhya Pradesh

The Depression over north Chhattisgarh & neighborhood moved further west-northwestwards during past 6 hours with a speed of 10 kmph, and lay centered at 1730 hrs IST of today, the 14th September, 2021, over north Chhattisgarh & adjoining East Madhya Pradesh, near latitude 22.7°N and longitude 82.5°E, about 90 km south-southwest of Ambikapur (Chhattisgarh) and about 180 km east-southeast of Umaria (Madhya Pradesh).

It is very likely to weaken into a Well Marked Low Pressure area during the next 12 hours and continue to move west-northwestwards across Madhya Pradesh during the next 48 hours.

Warnings:

(i) Rainfall

- **14th September:** Light to moderate rainfall at most places: with heavy to very heavy rainfall & extremely heavy falls at isolated places likely over Chattisgarh & east Madhya Pradesh, heavy to very heavy rainfall at isolated places likely over Odisha, Gangetic West Bengal,

south Gujarat Region, Saurashtra, north Konkan, north Madhya Maharashtra and heavy rainfall at isolated places over Vidarbha, Jharkhand, east Uttar Pradesh and East Rajasthan.

- **15th September:** Light to moderate rainfall at most places: with heavy to very heavy & extremely heavy falls at isolated places very likely over Gujarat State & Madhya Pradesh; heavy to very heavy rainfall at isolated places over north Konkan and heavy rainfall at isolated places over Chhattisgarh, east Uttar Pradesh and East Rajasthan.
- **16th September:** Light to moderate rainfall at most places: with heavy to very heavy rainfall at isolated places very likely over Gujarat State, east Rajasthan and west Madhya Pradesh, and heavy rainfall at isolated places very likely over east Uttar Pradesh, Haryana, Chandigarh & Delhi, east Madhya Pradesh, east Rajasthan and north Konkan.

(ii) EXPECTED IMPACT & ACTION SUGGESTED: Due to very Heavy/Extremely heavy Rainfall over Gujarat state, Chhattisgarh, Madhya Pradesh, Odisha, West Bengal & east Rajasthan.

A. Impact Expected

- Localized Flooding of roads, inundation and water logging in low lying areas and closure of underpasses mainly in urban areas of the above region.
- Occasional reduction in visibility due to heavy rainfall.
- Disruption of traffic in major cities due to water logging in roads leading to increased travel time.
- Minor damage to kutchha roads. Possibilities of damage to vulnerable structure.
- Localized Landslides/Mudslides
- Damage to horticulture and standing crops in some areas due to inundation and strong winds.
- It may lead to riverine flooding in some river catchments (for riverine flooding please visit Web page of Central Water Commission)

B. Action Suggested

- Check for traffic congestion on your route before leaving for your destination.
- Follow any traffic advisories that are issued in this regard.
- Avoid going to areas that face the water logging problems often.
- Avoid staying in vulnerable structure.
- Follow IMD warnings for updates

The next bulletin will be issued at 0230 hrs IST of 15th September, 2021.

(Sunitha Devi)
Scientist-F, RSMC, New Delhi

Copy to: ACWC Kolkata/ Chennai/Mumbai CWC Bhubaneswar/CWC Visakhapatnam/CWC Ahmedabad/ MC Ranchi/MC Hyderabad/MC Raipur/MC Goa/MC Bhopal

<p>LEGEND: Heavy Rainfall: 64.5 to 115.5mm, Very Heavy Rainfall: 115.6 to 204.4mm, Extremely Heavy Rainfall: 204.5mm or more. Many Places: 51% to 75% of the stations, Most Places: more than 76% of total stations, Isolated Places: Less than 25% of total stations</p>



OBSERVED AND FORECAST TRACK OF DEPRESSION OVER NORTH CHHATTISGARH & ADJOINING EAST MADHYA PRADESH BASED ON 1200 UTC OF 14TH SEPTEMBER, 2021



DATE/TIME IN UTC
IST=UTC + 0530
L: LOW PRESSURE AREA
WML: WELL MARKED LOW PRESSURE AREA
D: DEPRESSION (17-27 KT)
DD: DEEP DEPRESSION (28-33 KT)
CS: CYCLONIC STORM (34-47 KT)
SCS: SEVERE CYCLONIC STORM (48-63KT)
VSCS: VERY SEVERE CYCLONIC STORM (64-89 KT)
ESCS: EXTREMELY SEVERE CYCLONIC STORM (90-119 KT)
SuCS: SUPER CYCLONIC STORM (\geq 120 KT)

	LESS THAN 34 KT
	34-47 KT
	\geq 48 KT
	OBSERVED TRACK
	FORECAST TRACK
	CONE OF UNCERTAINTY

SAT : INSAT-3D IMG

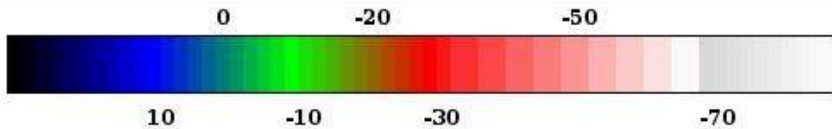
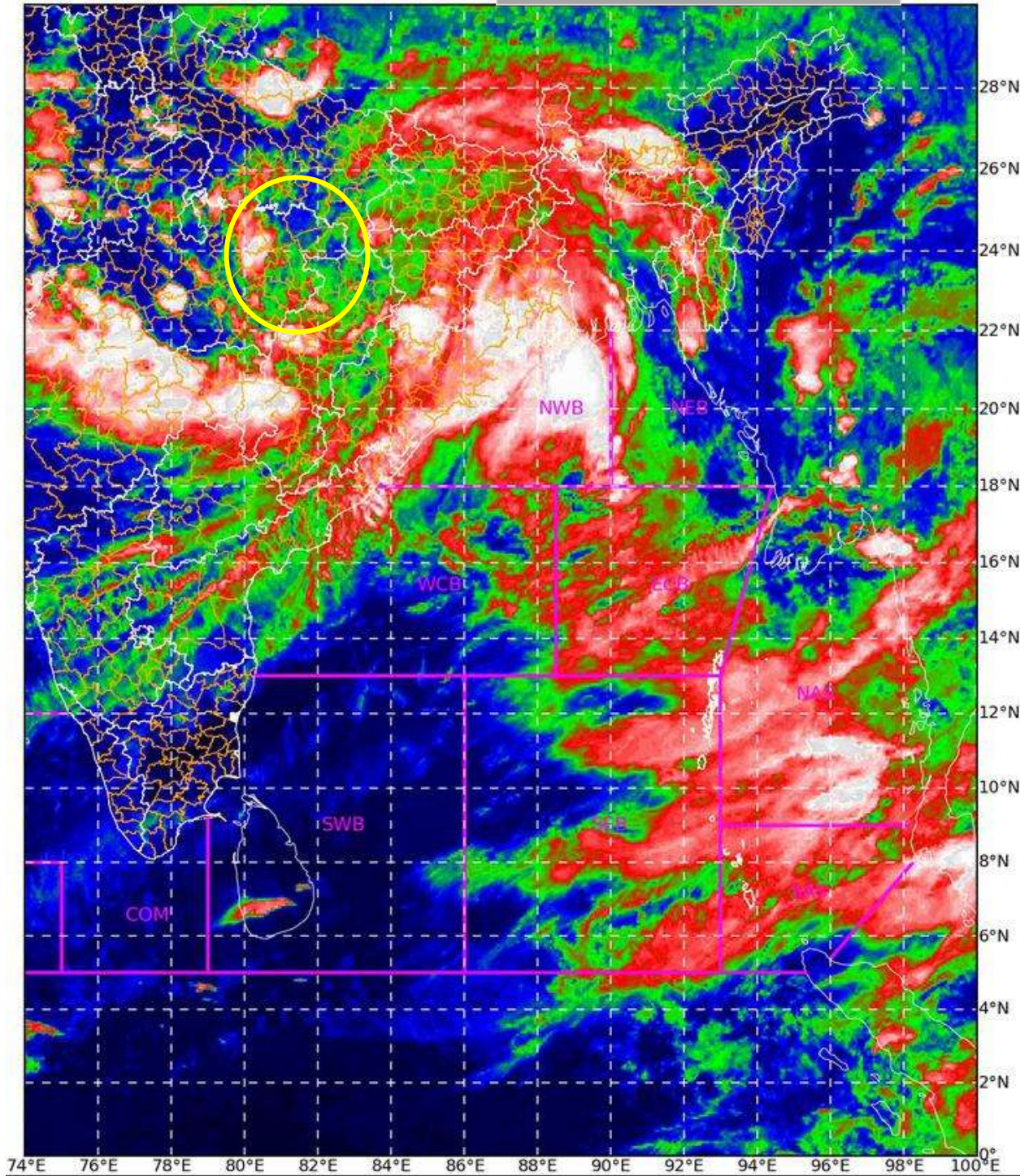
14-09-2021/(1300 to 1326) GMT

IMG_TIR1_TEMP 10.8 um

14-09-2021/(1830 to 1856) IST

L1C Mercator

DEPRESSION 22.7°N; 82.5°E



Celsius
IMD, DELHI

Meteorological Sub-division level heavy rainfall warning

